

# J129



## UNIVERSAL QUARTER TURN CAM LOCK, M22 THREAD WITH T-HANDLE AND LOCK

### Materials:

- (1) T-handle made in zamak alloy (zinc, aluminium, copper).
- (2) Die-cast zamak lock body M22x1.5 (stator) and rotor.
- (3) Die-cast zamak hexagon lock nut M22x1.5.
- (4) Rubber gasket.
- (5) Steel cam (E=0 straight, E=2,4,6,8,10 formed out).
- (6) Phillips steel fixing screw M6x10.
- (7) Stainless steel lock cylinder, keyed alike.

### Surface finish:

#### L129-01

- (1) Satin.
- (2-3-4-5-6) Smooth.

#### L129-L

- (1) Smooth.

### Colour:

#### L128-01

- (1) Black epoxy powder coated (RAL 9011).
- (2-3-4-5-6) Standard galvanising.

#### L128-L

- (1) Bright chrome plating.
- (2-3-4-5-6) Standard galvanising.

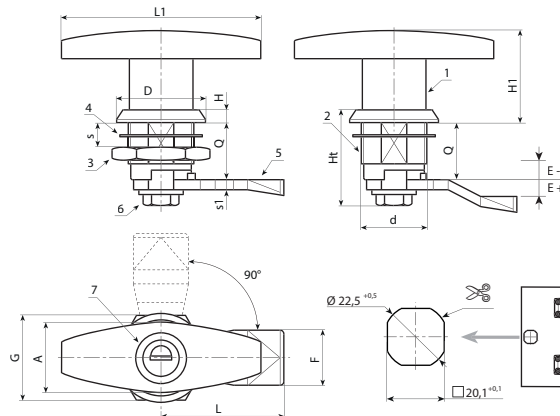
### Key:

Pair of keyed alike keys with plastic body.

### Rotation: 90°

### Special Requests:

- Upon request and for a minimum of 50 pieces, rotors can be supplied with height Q= 30 and 36.



### Version J129-01: black coated.

| Code | Art.               | d   | Q  | L1 | L  | E  | F    | D  | A  | G  | H1 | Ht   | H | H1 | S(max.) | s1 | g |
|------|--------------------|-----|----|----|----|----|------|----|----|----|----|------|---|----|---------|----|---|
| -    | J12922.Z18E-4X4501 | M22 | 18 | 78 | 45 | -4 | 19   | 32 | 23 | 27 | 38 | 32,5 | 6 | 38 | 8       | 4  | - |
| -    | J12922.Z18E-2X4501 | M22 | 18 | 78 | 45 | -2 | 19   | 32 | 23 | 27 | 38 | 32,5 | 6 | 38 | 8       | 4  | - |
| -    | J12922.Z18E00X4501 | M22 | 18 | 78 | 45 | 0  | 19,5 | 32 | 23 | 27 | 38 | 32,5 | 6 | 38 | 8       | 4  | - |
| -    | J12922.Z18E02X4501 | M22 | 18 | 78 | 45 | 2  | 19   | 32 | 23 | 27 | 38 | 32,5 | 6 | 38 | 8       | 4  | - |
| -    | J12922.Z18E04X4501 | M22 | 18 | 78 | 45 | 4  | 19   | 32 | 23 | 27 | 38 | 32,5 | 6 | 38 | 8       | 4  | - |
| -    | J12922.Z18E06X4601 | M22 | 18 | 78 | 46 | 6  | 19,5 | 32 | 23 | 27 | 38 | 32,5 | 6 | 38 | 8       | 4  | - |
| -    | J12922.Z18E08X4501 | M22 | 18 | 78 | 45 | 8  | 19,5 | 32 | 23 | 27 | 38 | 32,5 | 6 | 38 | 8       | 4  | - |
| -    | J12922.Z18E10X4501 | M22 | 18 | 78 | 45 | 10 | 19,5 | 32 | 23 | 27 | 38 | 32,5 | 6 | 38 | 8       | 4  | - |
| -    | J12922.Z18E12X4501 | M22 | 18 | 78 | 45 | 12 | 19,5 | 32 | 23 | 27 | 38 | 32,5 | 6 | 38 | 8       | 4  | - |

### Version J129-L: chromed.

| Code | Art.              | d   | Q  | L1 | L  | E  | F    | D  | A  | G  | H1 | Ht   | H | H1 | S(max.) | s1 | g |
|------|-------------------|-----|----|----|----|----|------|----|----|----|----|------|---|----|---------|----|---|
| -    | J12922.Z18E-4X45L | M22 | 18 | 78 | 45 | -4 | 19   | 32 | 23 | 27 | 38 | 32,5 | 6 | 38 | 8       | 4  | - |
| -    | J12922.Z18E-2X45L | M22 | 18 | 78 | 45 | -2 | 19   | 32 | 23 | 27 | 38 | 32,5 | 6 | 38 | 8       | 4  | - |
| -    | J12922.Z18E00X45L | M22 | 18 | 78 | 45 | 0  | 19,5 | 32 | 23 | 27 | 38 | 32,5 | 6 | 38 | 8       | 4  | - |
| -    | J12922.Z18E02X45L | M22 | 18 | 78 | 45 | 2  | 19   | 32 | 23 | 27 | 38 | 32,5 | 6 | 38 | 8       | 4  | - |
| -    | J12922.Z18E04X45L | M22 | 18 | 78 | 45 | 4  | 19,5 | 32 | 23 | 27 | 38 | 32,5 | 6 | 38 | 8       | 4  | - |
| -    | J12922.Z18E06X46L | M22 | 18 | 78 | 46 | 6  | 19,5 | 32 | 23 | 27 | 38 | 32,5 | 6 | 38 | 8       | 4  | - |
| -    | J12922.Z18E08X45L | M22 | 18 | 78 | 45 | 8  | 19,5 | 32 | 23 | 27 | 38 | 32,5 | 6 | 38 | 8       | 4  | - |
| -    | J12922.Z18E10X45L | M22 | 18 | 78 | 45 | 10 | 19,5 | 32 | 23 | 27 | 38 | 32,5 | 6 | 38 | 8       | 4  | - |
| -    | J12922.Z18E12X45L | M22 | 18 | 78 | 45 | 12 | 19,5 | 32 | 23 | 27 | 38 | 32,5 | 6 | 38 | 8       | 4  | - |