

# J120

**NEW**

+80°  
-20°

C10

UL94  
HB

RoHS  
COMPLIANT

## UNIVERSAL QUARTER TURN PLASTIC CAM LOCK WITH QUICK INSTALL AND TRIANGLE SOCKET KEY

### Materials:

- (1) 20mm body with deformable fixing ribs, for snap fitting in sheet metal push tabs. Reinforced polyamide PA6.6. Resistant to oils and greases.
- (2) Triangular shaped groove, in reinforced PA6.6 polyamide.
- (3) Self-tapping Phillips steel fixing screw 4.2x10.
- (4) Steel cam (E=0 straight, E=2,4,6,8,10 formed out, E=-2 formed in).

### Surface finish:

- (1-2) Satin.
- (3-4) Smooth.

### Colour:

- (1-2) Black (RAL 9011).
- (3-4) Galvanising standard.

### Key (optional):

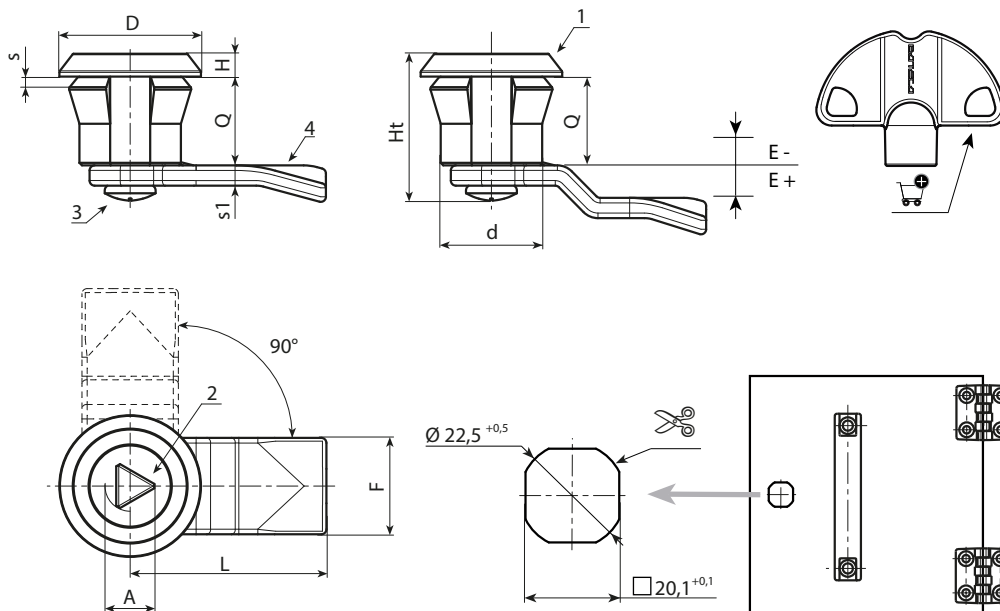
Red polyamide key (PA6), art. J090.  
**ATTENTION:** The key is not supplied. To be ordered separately.  
 [page 319].

### Rotation:

90°.

### Special Requests:

- Upon request the key can be supplied with the lock. Add letter C at the end of the main code.



Code	Art.	A	d	D	L	Q	E	F	Ht	H	S(max.)	s1	g	Key
-	J12020.T08E-4X4501	8	20	28	45	18	-4	19	30	4	1-2	4	-	J090050.TT0816
-	J12020.T08E-2X4501	8	20	28	45	18	-2	19	30	4	1-2	4	-	J090050.TT0816
-	J12020.T08E00X4501	8	20	28	45	18	0	19	30	4	1-2	4	-	J090050.TT0816
-	J12020.T08E04X4501	8	20	28	45	18	4	19	30	4	1-2	4	-	J090050.TT0816
-	J12020.T08E06X4501	8	20	28	45	18	6	19	30	4	1-2	4	-	J090050.TT0816
-	J12020.T08E08X4501	8	20	28	45	18	8	19	30	4	1-2	4	-	J090050.TT0816
-	J12020.T08E10X4501	8	20	28	45	18	10	19	30	4	1-2	4	-	J090050.TT0816
-	J12020.T08E12X4501	8	20	28	45	18	12	19	30	4	1-2	4	-	J090050.TT0816