

H171

KNURLED HANDWHEEL WITH SHORT HUB



Materials:

Reinforced polyamide.
Resistant to oils and greases.

Surface finish:

Satin.

Colour:

Black (RAL 9011).

Inserts:

H171:

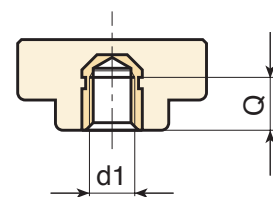
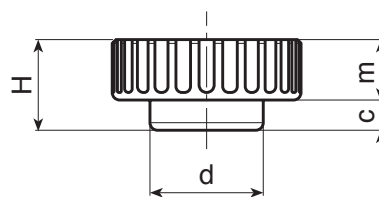
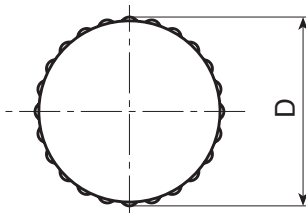
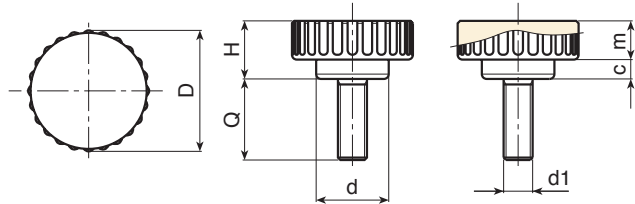
Galvanised steel threaded stud (thread tolerance 6g).

H171CON:

Brass insert with female threaded hole (thread tolerance 6H).

Special requests:

- Upon request and for special quantities inserts with stud can be supplied with customised lengths for a minimum quantity of 100 pieces.



Version H171CON: With brass insert.

Code	art.	D	H	d	m	c	d1 _{6H}	g
-	H18015.BM0501	25	12	15.5	4	8	M6	7
-	H18015.BM0501	25	12	15.5	4	8	M6	8

Version H171: With galvanised steel stud.

Code	art.	D	H	d	m	c	LM	d1 _{6g}	Q	g
-	H18015.BM0501	25	12	15.5	4	8	40	M6	20	11
-	H18015.BM0501	25	12	15.5	4	8	40	M8	20	15

LM = maximum mouldable length.
Customised stud length available for a minimum of 250 pieces.