

# F289



## STAR HANDWHEEL WITH STEEL HUB AND THREADED STUD

### Materials:

Reinforced polyamide.  
Resistant to oils and greases.

### Surface finish:

Satin.

### Colour:

Black (RAL 9011).

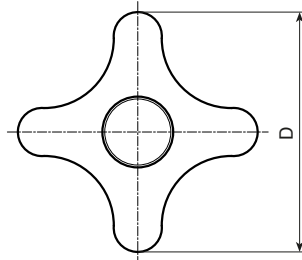
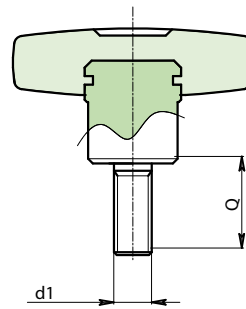
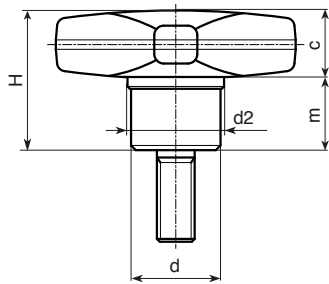
### Inserts:

**F289:** Galvanised steel insert with threaded stud (thread tolerance 6g).

**F289CIN:** Stainless steel insert with threaded stud (Aisi 303) (thread tolerance 6g).

### Special requests:

- Upon request and for special quantities inserts can be supplied with customised lengths.
- Upon request and for special quantities available in the colours indicated in the chart (attention: reduced range) [page].



### Version F289: Galvanised steel hub.

Code	Art.	D	d	d2	H	m	c	d1 <sub>6g</sub>	Q	LM	
------	------	---	---	----	---	---	---	------------------	---	----	--

Enter the selected stud length in place of the two dots . . in the item code.

A.R. = Upon request, for a minimum of 150 pieces.

LM = Maximum mouldable length.

### Version F289 CIN: Stainless steel hub (Aisi 303).

Code	Art.	D	d	d2	H	m	c	d1 <sub>6g</sub>	Q	LM	
------	------	---	---	----	---	---	---	------------------	---	----	--

Enter the selected stud length in place of the two dots . . in the item code.

A.R. = Upon request, for a minimum of 150 pieces.

LM = Maximum mouldable length.

