

F186CAT



SOLID STAR HANDWHEEL WITH RETAINING CHAIN AND FEMALE THREADED INSERT

Materials:

Reinforced polyamide.
Resistant to oils and greases.

Surface finish:

Satin.

Colour:

Black (RAL 9011).

Inserts:

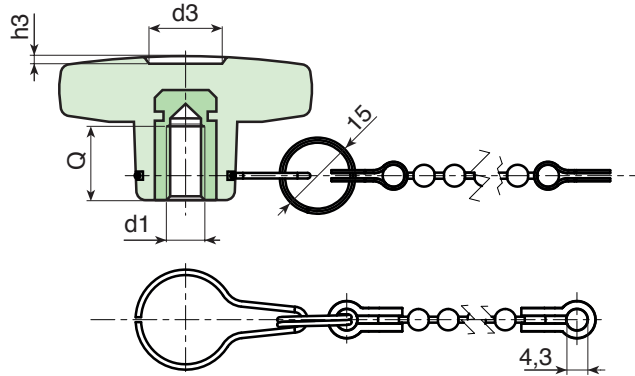
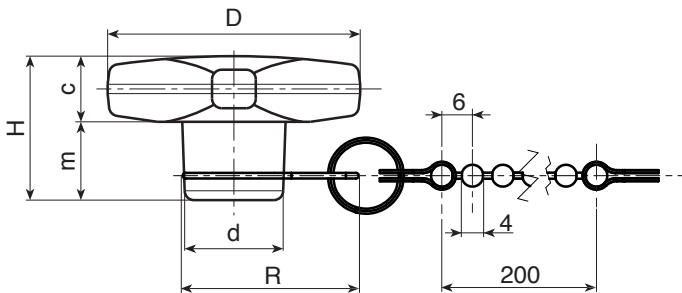
Brass insert with female threaded hole (thread tolerance 6H).

Chain:

Black acetal (POM) chain. Harmonic stainless steel (Aisi 302) joints, retaining ring and hub hook.

Special Requests:

- Upon request and for special quantities inserts can be supplied in different materials.
- Upon request the chain can be supplied with customised lengths.
- Upon request and for special quantities available in the colours indicated in the chart (attention: reduced range [page]).



| Code | Art. | D | H | d | R | c | m | d3 | h3 | d1 _{6H} | Q | g |
|------|------------------|----|------|----|----|------|------|----|-----|------------------|----|------|
| - | F18632.TM0401CAT | 32 | 23 | 15 | 32 | 11 | 12 | 11 | 1.5 | M4 | 7 | 14 |
| - | F18632.TM0501CAT | 32 | 23 | 15 | 32 | 11 | 12 | 11 | 1.5 | M5 | 14 | 14.5 |
| - | F18632.TM0601CAT | 32 | 23 | 15 | 32 | 11 | 12 | 11 | 1.5 | M6 | 10 | 15 |
| - | F18640.TM0501CAT | 40 | 24.5 | 16 | 33 | 12 | 12.5 | 13 | 1.5 | M5 | 14 | 17 |
| - | F18640.TM0601CAT | 40 | 24.5 | 16 | 33 | 12 | 12.5 | 13 | 1.5 | M6 | 16 | 18 |
| - | F18640.TM0801CAT | 40 | 24.5 | 16 | 33 | 12 | 12.5 | 13 | 1.5 | M8 | 14 | 19 |
| - | F18650.TM0601CAT | 50 | 29 | 20 | 35 | 14 | 15 | 14 | 2 | M6 | 16 | 28 |
| - | F18650.TM0801CAT | 50 | 29 | 20 | 35 | 14 | 15 | 14 | 2 | M8 | 14 | 29 |
| - | F18650.TM1001CAT | 50 | 29 | 20 | 35 | 14 | 15 | 14 | 2 | M10 | 14 | 30 |
| - | F18660.TM0801CAT | 60 | 34 | 24 | 38 | 15.5 | 18.5 | 18 | 2 | M8 | 19 | 43 |
| - | F18660.TM1001CAT | 60 | 34 | 24 | 38 | 15.5 | 18.5 | 18 | 2 | M10 | 21 | 46 |
| - | F18660.TM1201CAT | 60 | 34 | 24 | 38 | 15.5 | 18.5 | 18 | 2 | M12 | 18 | 47 |