

S118

MALE CONNECTOR FOR PANEL TP (SUITABLE FOR INVERTER ONLY)



Materials:
(2-3) Reinforced polyamide.
Resistant to oils and greases.

Surface finish:
Satin.

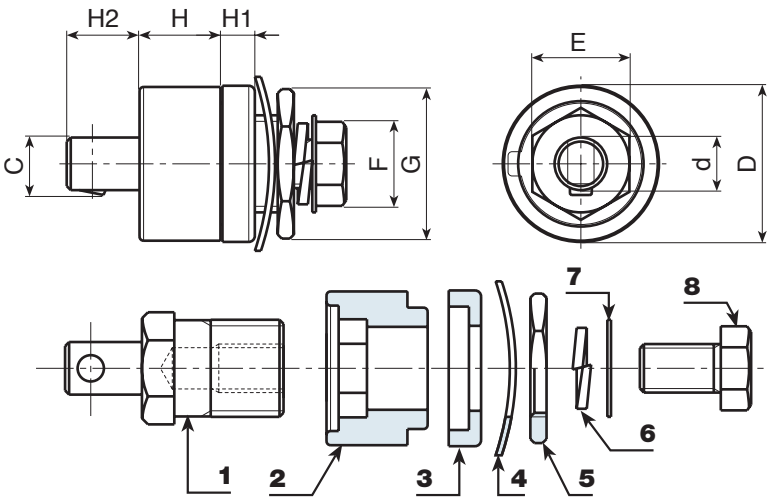
Colour:
Black (RAL 9011).


Inserts:
(1) Brass insert with male connector UNI.
(4) Black-oxyde treated steel corrugated washer DIN 137.
(5) Yellow passivated steel threaded hexagon ring nut.
(6) Black-oxyde treated steel split washer UNI 1751.
(7) Yellow passivated steel washer.
(8) Yellow passivated hex head screw DIN933/UNI 5739.

Special Requests:
• None.



S118+S113



Code	art.	D	H	H1	H2	d	c	E	F	G		Amp. Max
-	S118.M3550	38	20	8	17	13	14	21	17	27	160	200